



Acme Sanitary Ware Co. Ltd.

1/F, Acme Building, 22-28 Nanking Street, Kowloon, Hong Kong
 Tel: 2388 7171 Fax: 2710 8012
 Email: acme@acmesanitary.com.hk
 Website: www.acmesanitary.com.hk



PROJECT		REF		REV	ITEM CODE	
LOCATION		DATE			PAGE	

SANITARY WARE SPECIFICATION SHEET

<p>Item Descriptions</p> <p>Dimensions</p> <p>Model</p> <p>Finish</p> <p>Material</p> <p>Manufacturer</p> <p>Supplier</p> <p>Contact Tel/Fax</p> <p>E-mail</p> <p>Website</p>	<p>Koala Kare (USA) Surface-mounted adult changing station; support up to 500 lbs; adjustable height; DC Supply with lead acid battery</p> <p>L1913 x W1023 x H1536 mm</p> <p>KB3000-AHL</p> <p>Stain / White</p> <p>Stainless Steel / UHMW PE</p> <p>Koala Kare (USA)</p> <p>Acme Sanitary Ware Co. Ltd Mr. Eric Wong/ Mr. Don Yuen</p> <p>(852) 2388-7171 / (852) 2710-8012</p> <p>acme@acmesanitary.com.hk</p> <p>www.acmesanitary.com.hk</p>	<p style="text-align: center;">Illustration/ Drawing</p> <div style="text-align: right;"> </div> <p style="text-align: center;">lift/drop locking mechanism</p>
---	--	---

Material

White UHMW PE sheet bed surface, with stainless steel retaining bars. Powder coated 2" (50mm) square steel tube changing surface frame. Stainless steel wall unit covering, with 6mm thick plastic pods to cover hinge mechanism. Powder coated square tube steel guard, backed with UHMW PE.

Operation

Concealed pneumatic cylinders provide controlled, slow opening and closing of changing unit. Has been tested to exceed static load performance requirements of 500lbs when properly installed. Integrated guard allows for single handed operation with lift/drop locking mechanism allows rotation to stow against magnet and has 10° operating angle. Height adjustment controls located on front edge of changing surface and center top of wall unit.

Specification

Basis of Design: Model KB3000-AHL as manufactured by Koala Kare Products, a Division of Bobrick.

Changing surface shall electronically adjust from 12" (300mm) to 41" (1,041mm) from floor. Unit shall have two sets of built-in electronic controls for height adjustment. One located on face of wall cover and one on the front of changing surface. Unit shall be tested to support up to 500 lbs. (227 kg.) static load. Changing Surface shall be polyethylene and meet IK10 standard for resistance to high impact and sharp objects. Unit shall have a built-in backup battery system that allows for continuous operation in the event of a power interruption. Unit shall include a wall-mounted emergency stop to break power to actuator. Changing Surface shall be a minimum 75 ¼" (1,911mm) long, and 31 ½" (800mm) wide, and can be opened and closed with one-hand. Unit shall have a safety rail with a curved dip in the center for easier patient changing by caregiver. Safety rail rotates and locks under changing bed when in closed position. Unit shall withstand significant exposure to water without damage to electrical components. It shall include a grounded power cord and have a splash-proof control system. Electrical components and wiring shall not come in contact with station users or caregivers. Changing surface shall not have covered areas to help ensure cleanliness. Frame shall be constructed of 2" powder coated steel tubing. Unit shall have ISO 60601-1 and -2 whole product certification. Unit should be cycle tested through range of motion 28,000 times at 500lbs. Stress tested to 100,000 cycles with 500lbs. bounce load test.

* All information of the above is for the reference only. No prior notice is made if any changes.



PROJECT		REF		REV	ITEM CODE	
LOCATION		DATE			PAGE	

SANITARY WARE SPECIFICATION SHEET

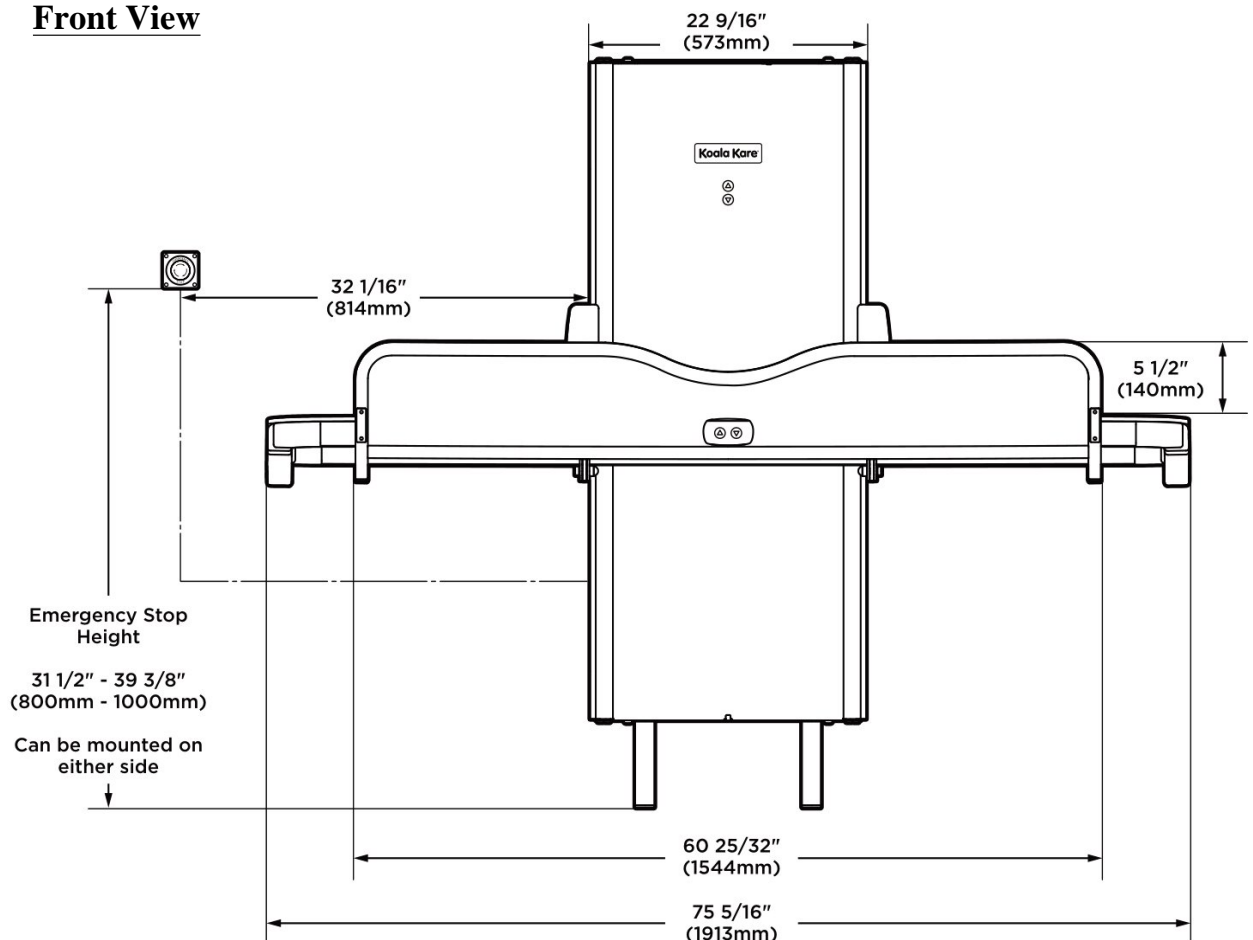
Pre-Installation Requirements

Electrical requirement: A switched 110v, electrical supply is required. A waterproof electrical supply will be required if used in wet room environment in accordance with build code regulations. The unit will be hard wired and should have control switch mounted in an appropriate location to isolate power supply. The emergency stop needs to be installed and traced into the wall.

Fixing requirement: The unit is wall-mounted and can rest on the floor or be wholly fitted to the wall. The unit requires a minimum of 2" (50mm) at each end of the changing surface when installed. The wall must be load bearing and strong enough to bear a load of 220lbs at each of the wall fixings. The wall must also be flat and free from obstruction from floor level to the top of the wall mount and the width of the bed length specified, equal about the centerline of the unit. The wall must be faced with a minimum of 1" (25mm) thick marine plywood, secured every 4" (102mm). The plywood must be in contact and supported by the floor a minimum of 67" (1072mm) high.

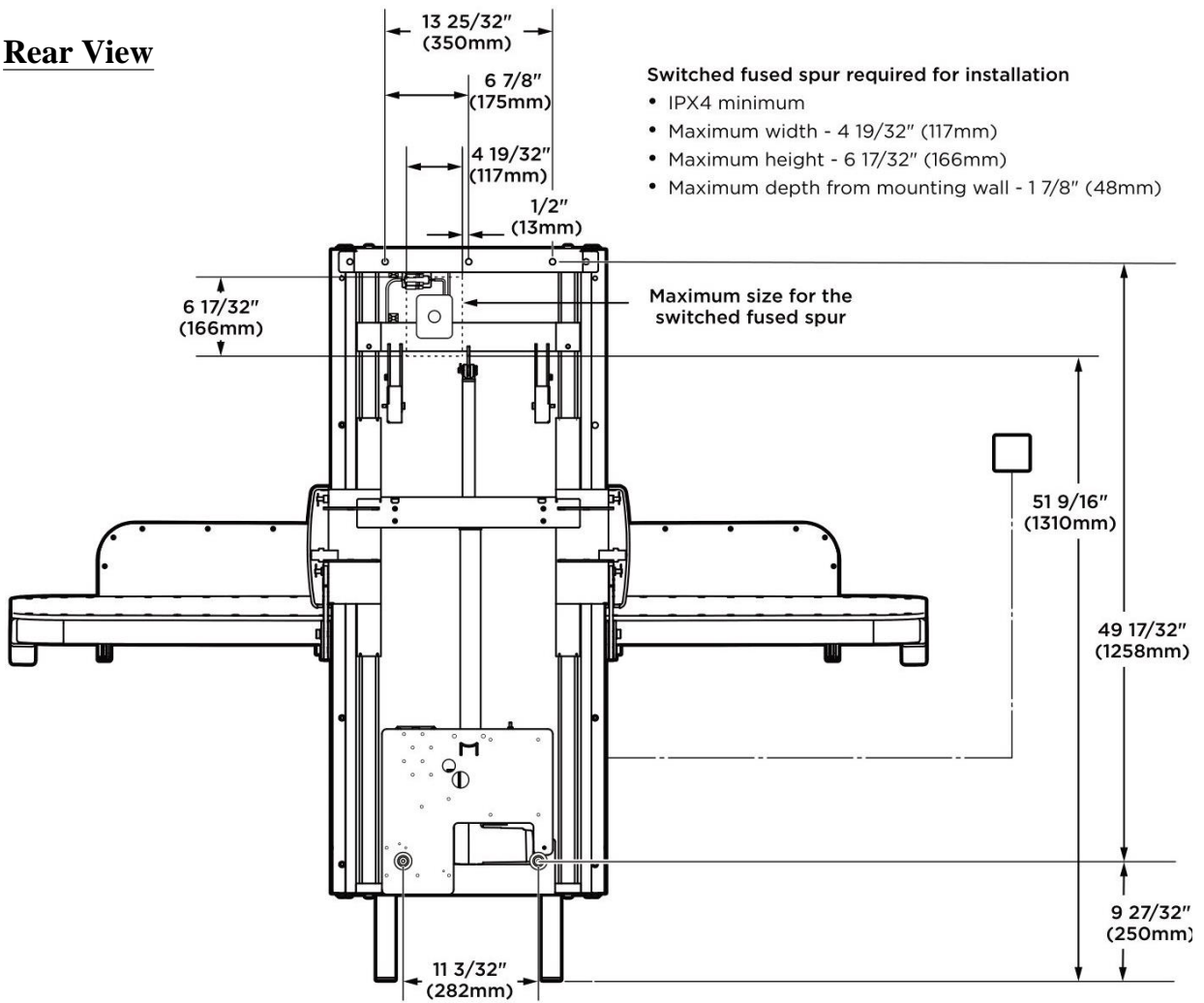
Please Note: The unit cannot be mounted to metal studs or similar unless it has been fully reinforced with timber studs that are secured to the top of the wall and the floor and faced with marine plywood.

Front View



*Diagrams are not to scale.

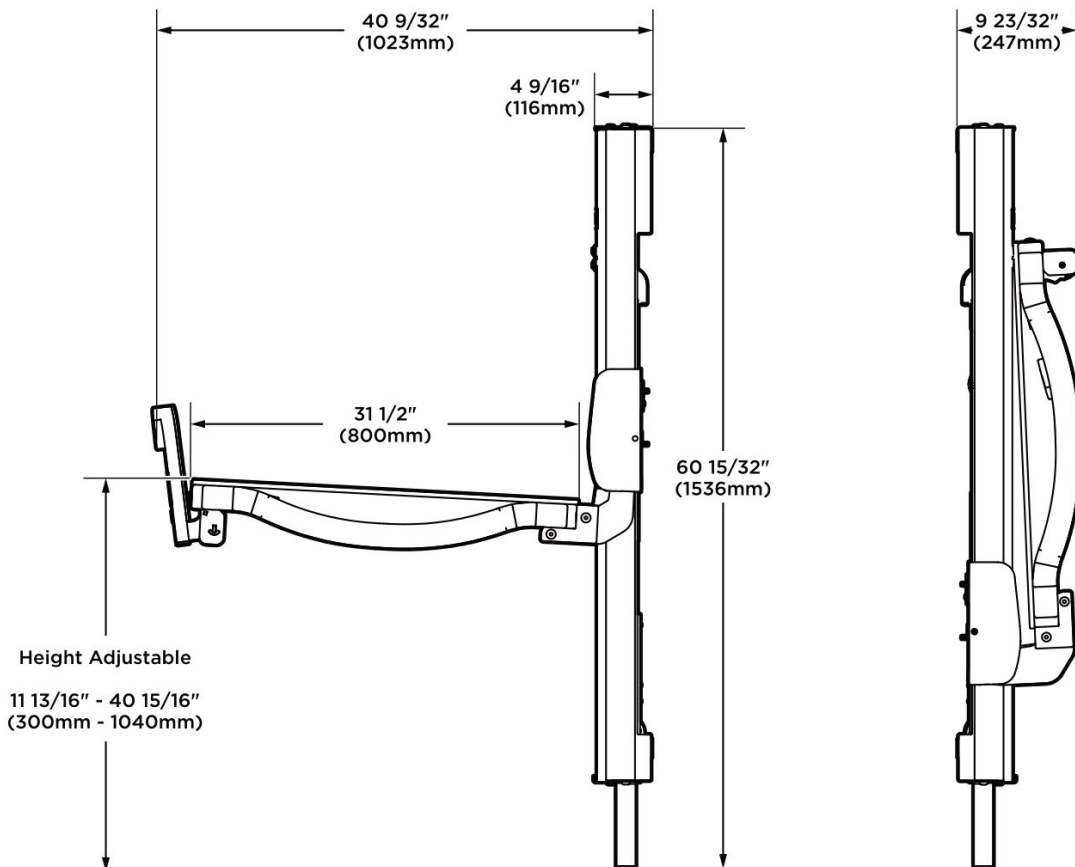
Rear View



Side View

Shown in an open position

Shown in folded position



AC input	110VAC-240VAC, 50/60Hz, 382VA
Power supply	Class I power supply
Applied part	Stretcher of device is an applied part type 'B'
Battery specification	Lead acid battery / "non-spillable" Input 30V - Output 24V Supplier reference - TiMotion (TBB2-4307-001)
Battery model	TiMotion TBB2 1.2A
Fuses	5Amp fuses (External to the device, part of the mains supply system)
Duty cycle	10% maximum: 2min use & 18mins rest
Maximum working load	500 lbs (227 kg)
Sound emission	LAeq 56dB at maximum working load
Width	75 1/4" (1911 mm)
Height	60 1/2" (1536 mm)
Depth	40 3/4" (1026 mm) - Stretcher and guard deployed
Weight of product	308 lbs (140 kg)
Materials	Mild steel, Stainless Steel, Polyethylene
Operating ambient temperature range	50°F to 104°F / 10°C to 40°C
Operating relative humidity range	10 - 80% not condensed at 68°F / 20°C
Operating atmospheric pressure	50kPa to 106kPa
IP class	IPX4
Transport & storage conditions	10°C to 40°C / 50°F to 104°F 10 - 80% not condensed at 20°C / 68°F



CAUTION: Battery must only be replaced by qualified service personnel. Replacement battery must be the same model as the original battery supplied with the device.



Suitable for adults with special needs



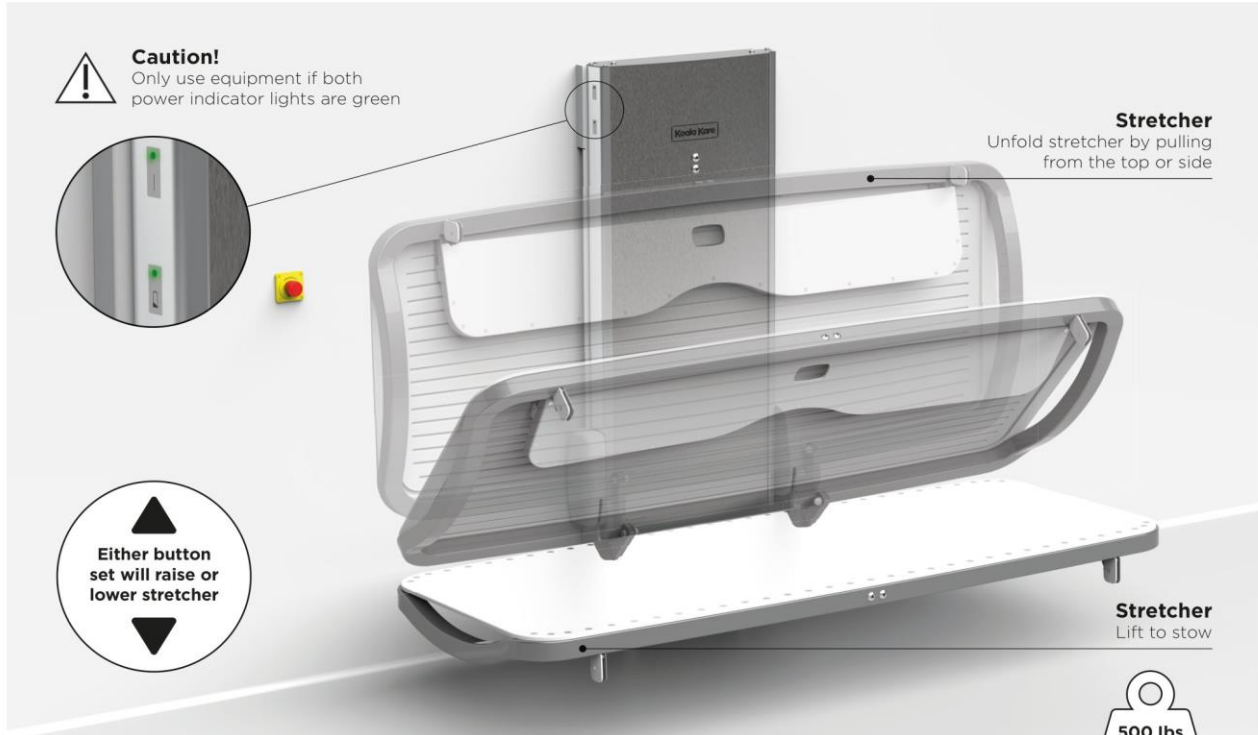
Acme Sanitary Ware Co. Ltd.

1/F, Acme Building, 22-28 Nanking Street, Kowloon, Hong Kong
Tel: 2388 7171 Fax: 2710 8012
Email: acme@acmesanitary.com.hk
Website: www.acmesanitary.com.hk



KB3000-AHL

Adjustable Height Changing Station



Warning! Risk of injury by crushing. Ensure the area underneath the stretcher is kept clear of obstructions before operating. Keep clear of the area above the stretcher when stowing.

Caution! Keep clear of moving parts when operating. Ensure there are no obstructions when moving the guard into position.

Action! Always deploy the guard before moving the changing table with a person on the stretcher.

This KB3000-AHL will require maintenance to ensure it is safe to operate. This service must be carried out by an approved, trained professional.

Note:

* All information of the above is for the reference only. No prior notice is made if any changes.



Acme Sanitary Ware Co. Ltd.

1/F, Acme Building, 22-28 Nanking Street, Kowloon, Hong Kong

Tel: 2388 7171 Fax: 2710 8012

Email: acme@acmesanitary.com.hk

Website: www.acmesanitary.com.hk



PROJECT		REF		REV	ITEM CODE	
LOCATION		DATE			PAGE	

SANITARY WARE SPECIFICATION SHEET



* All information of the above is for the reference only. No prior notice is made if any changes.



Troubleshooting



Problem: The stretcher won't move up or down

Suggestion: Check if the emergency stop has been activated, to release turn the emergency stop button clockwise. Check that the mains power supply is switched on. Check that you are using the correct button for the direction of your choice. Check battery status of the device. If the stretcher still won't move, use the other set of buttons. If you discover one or both sets of buttons are not working correctly, please contact Koala Kare at customerservice@koalabear.com

Problem: I cannot release the front guard

Suggestion: The guard is held in place by magnets, so with a strong tug, it should easily release.

Problem: I cannot put the guard down to stow it

Suggestion: The guard is held in place by a auto-lock mechanism. To release this you need to lift the guard before you try to rotate it down.

Problem: My guard does not stow correctly

Suggestion: The guard is held in place with magnets fixed to the underside of the stretcher. Ensure you have rotated the guard to meet the underside of the stretcher so that the magnets can engage.

Problem: My power indicator lights are not illuminated

Suggestion: If the mains power light is not on check that your mains power supply is switched on and live. If the battery power light is flashing please wait for it to turn green before using the product. If the mains light is on and the battery light is red or orange, but not flashing, please contact Koala Kare.

Problem: My battery status indicator light has been continually flashing for over 24 hours.

Suggestion: There maybe a problem with your recharging circuit. Please contact Koala Kare.

(Installation Instructions) <https://drive.google.com/file/d/1i15rvThPFmyR0BOtp50Ay7SaGTILv-vl/view?usp=sharing>



YouTube [\(Pre-Installation Video\) https://www.youtube.com/watch?v=w1R3er81Ekg](https://www.youtube.com/watch?v=w1R3er81Ekg)



YouTube [\(Installation Video\) https://www.youtube.com/watch?v=szvcE7IKiiM](https://www.youtube.com/watch?v=szvcE7IKiiM)